

# sCELL-H2000

Integrated eNB

3GPP Release 12

2x20W with MIMO

192 Concurrent Users

VoLTE

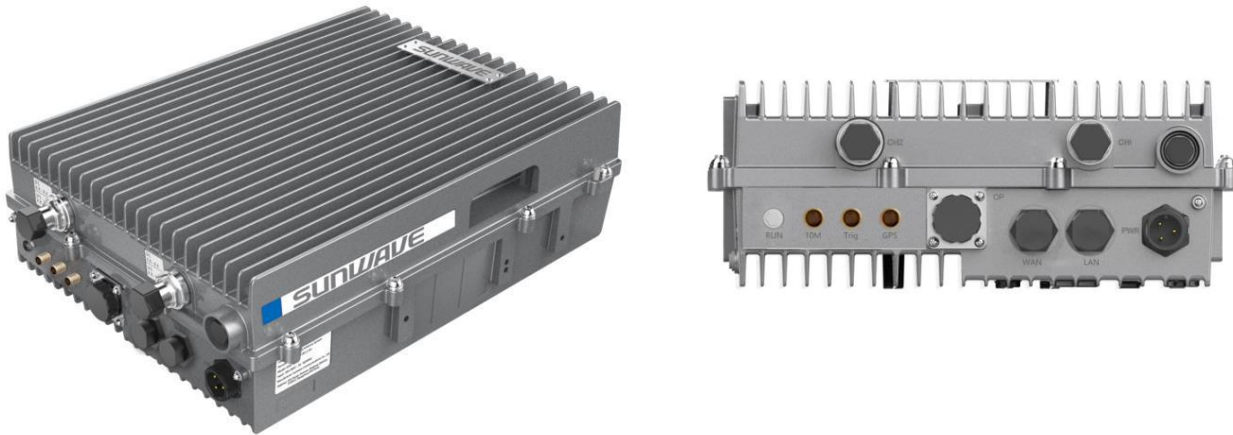
The sCELL-H2000 from SUNWAVE is an advanced outdoor LTE compact product that operates in TDD/FDD mode. This eNB provides users with high-speed broadband wireless access to the Internet using 2x20W output power (2x2 MIMO with 20W output each channel). This eNB is capable of operating in 5, 10, 15, or 20 MHz bandwidth, supporting 192 active users and 384 RRC users.

## sCELL-H2000 DATASHEET

### KEY FEATURES

- Standard B1/3/38/40/40/41 or customized
- Complies with 3GPP Release 13 standard
- Supports 5/10/15/20 MHz bandwidth
- GUI-based local and remote web management
- TR069 network management interface
- Cloud/local/embedded EPC is supported for more convenient and cost-effective deployment
- 192 concurrent users per eNodeB
- IoT with all standard LTE Evolved Packet Core (EPC)

### APPEARANCE



### HARDWARE SPECIFICATIONS

<b>LTE Mode</b>	TDD/FDD
<b>Frequency Bands</b>	B1/3/38/40/40/41 or customized
<b>Channel Bandwidth</b>	5 MHz, 10 MHz, 15 MHz, 20 MHz
<b>Max Output Power</b>	43 dBm / channel
<b>Power Supply</b>	AC220V±44V
<b>Power Consumption</b>	< 250W
<b>Receive Sensitivity</b>	<-104dBm
<b>Synchronization</b>	1588v2, GPS, NL
<b>Interfaces</b>	1 Optical (SFP) and 1 RJ-45 Ethernet interface (1 GE)
<b>MIMO</b>	DL: 2 x 2
<b>Installation</b>	Pole or wall mounting
<b>Antenna Type</b>	4.3-10 Female interface
<b>Dimensions (H x W x D)</b>	400 x 300 x 125 mm   15.75 x 11.81 x 4.92 in

Copyright © 2021 SUNWAVE All rights reserved.

## sCELL-H2000 DATASHEET

<b>Weight</b>	12.5 kg   27.56 in
<b>MTBF</b>	≥ 150000 hours
<b>MTTR</b>	≤ 1 hour

SOFTWARE SPECIFICATIONS		
<b>LTE Standard</b>	3GPP Release 13	
<b>Peak Rate (up to)</b>	FDD DL: 200Mbps@256 QAM UL: 75Mbps@64 QAM	TDD DL: 130Mbps@256 QAM UL: 15Mbps@64 QAM
<b>User Capacity</b>	128 VoLTE 192 RRC concurrent 384 RRC connected	
<b>QoS Control</b>	3GPP standard QCI	
<b>Modulation</b>	DL: QPSK, 16QAM, 64QAM, 256QAM UL: QPSK, 16QAM, 64QAM	
<b>Voice</b>	VoLTE, Circuit Switched Fallback (CSFB)	
<b>SON</b>	Automatic setup Automatic Neighbor Relation (ANR) PCI confliction detection	
<b>RAN Sharing</b>	Multi-Operator Core Network (MOCN)	
<b>Network Management</b>	TR069	
<b>UL Interference Detection</b>	Supported	
<b>Maintenance</b>	Remote or local maintenance Online status management Performance statistics Fault management Local or remote software upgrade Logging Connectivity diagnosis Automatic start and configuration Alarm reporting User information tracing Signaling trace	

ENVIRONMENTAL SPECIFICATIONS	
<b>Operating Temperature</b>	-40 °C ~ +55 °C   -40 °F ~ +131 °F
<b>Storage Temperature</b>	-40 °C ~ +75 °C   -40 °F ~ +158 °F
<b>Humidity</b>	5% ~ 98%
<b>Atmospheric Pressure</b>	86 kPa ~ 106 kPa

**sCELL-H2000 DATASHEET**

<b>Ingress Protection Rating</b>	IP65
<b>Power Interface Lightning Protection</b>	Differential mode: $\pm 10$ KA , Common mode: $\pm 20$ KA

Contact Us

[www.sunwave.com](http://www.sunwave.com)